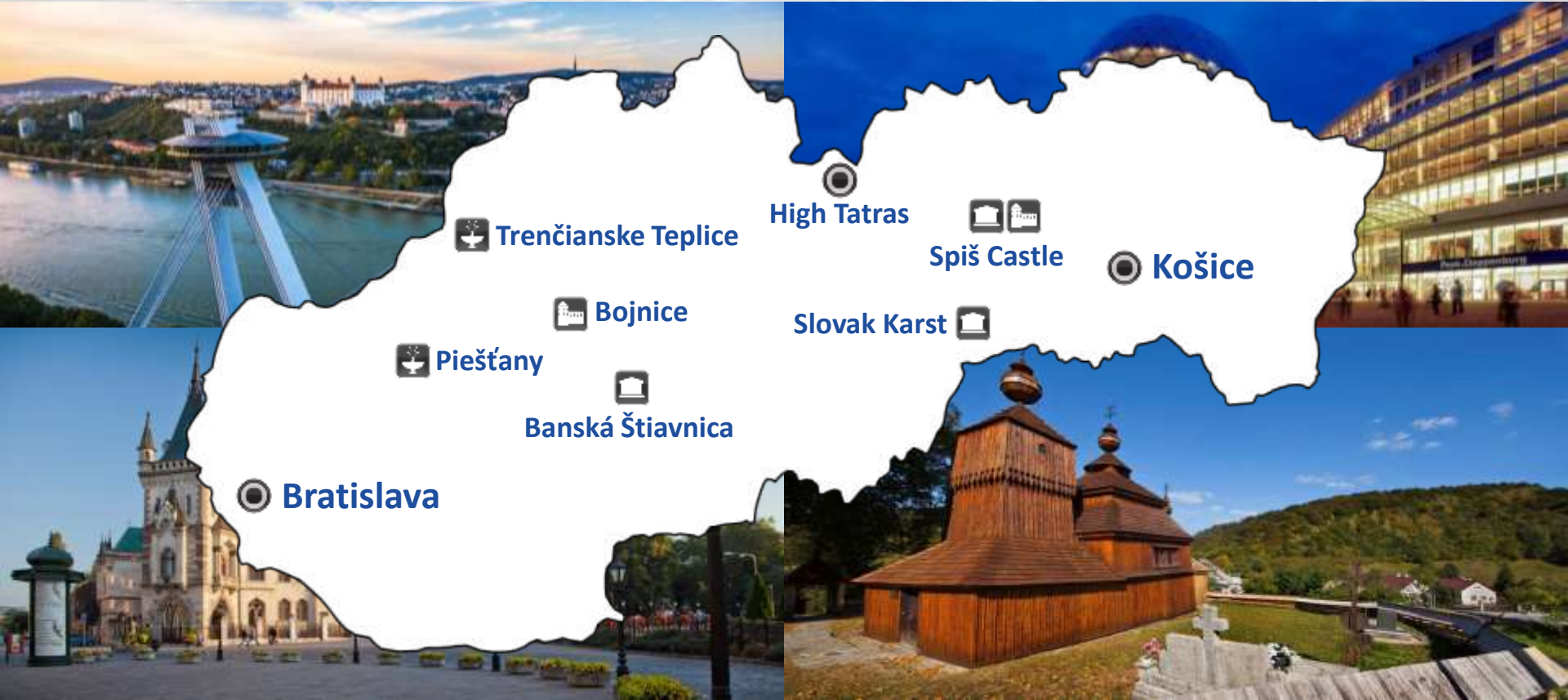


# Slovakia

TRAVEL IN  
SLOVAKIA  
GOOD IDEA



# General information

<b>Capital:</b>	Bratislava (500 000 citizens)
<b>Population:</b>	5 408 148 (as of 30.9.2012)
<b>Borders:</b>	Austria, Czech Republic, Hungary, Poland, Ukraine
<b>Membership:</b>	EU, NATO, OECD, UN, WTO, Schengen
<b>Currency:</b>	euro (€)
<b>Direct flight connections from European cities to:</b>	Bratislava, Košice Vienna airport with 200 connections is only 60 km from Bratislava



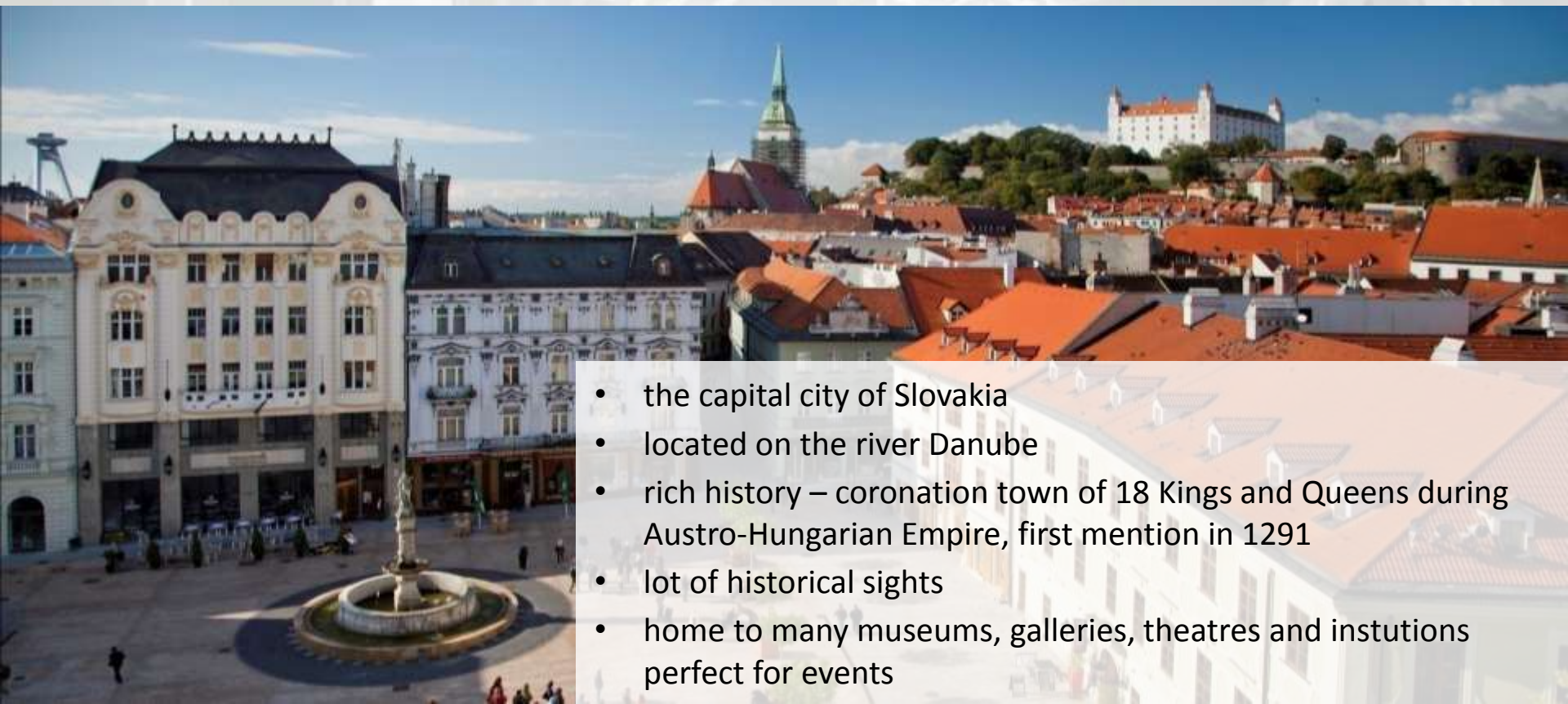
# Reasons to visit Slovakia



- new destination, attractive country for holidays and business
- stable, peaceful and safe destination
- culture of Central European friendly atmosphere
- great location and easy access by air, rail, boat and bus transport
- diversity



# Bratislava



- the capital city of Slovakia
- located on the river Danube
- rich history – coronation town of 18 Kings and Queens during Austro-Hungarian Empire, first mention in 1291
- lot of historical sights
- home to many museums, galleries, theatres and institutions perfect for events



# Bratislava

- busy cultural and social life: jazz festivals, opera, modern street art, traditional Christmas markets
- excellent gastronomy
- the best looking shopping mall in Bratislava – EUROVEA Galleria (opened 7 days a week till 9pm)



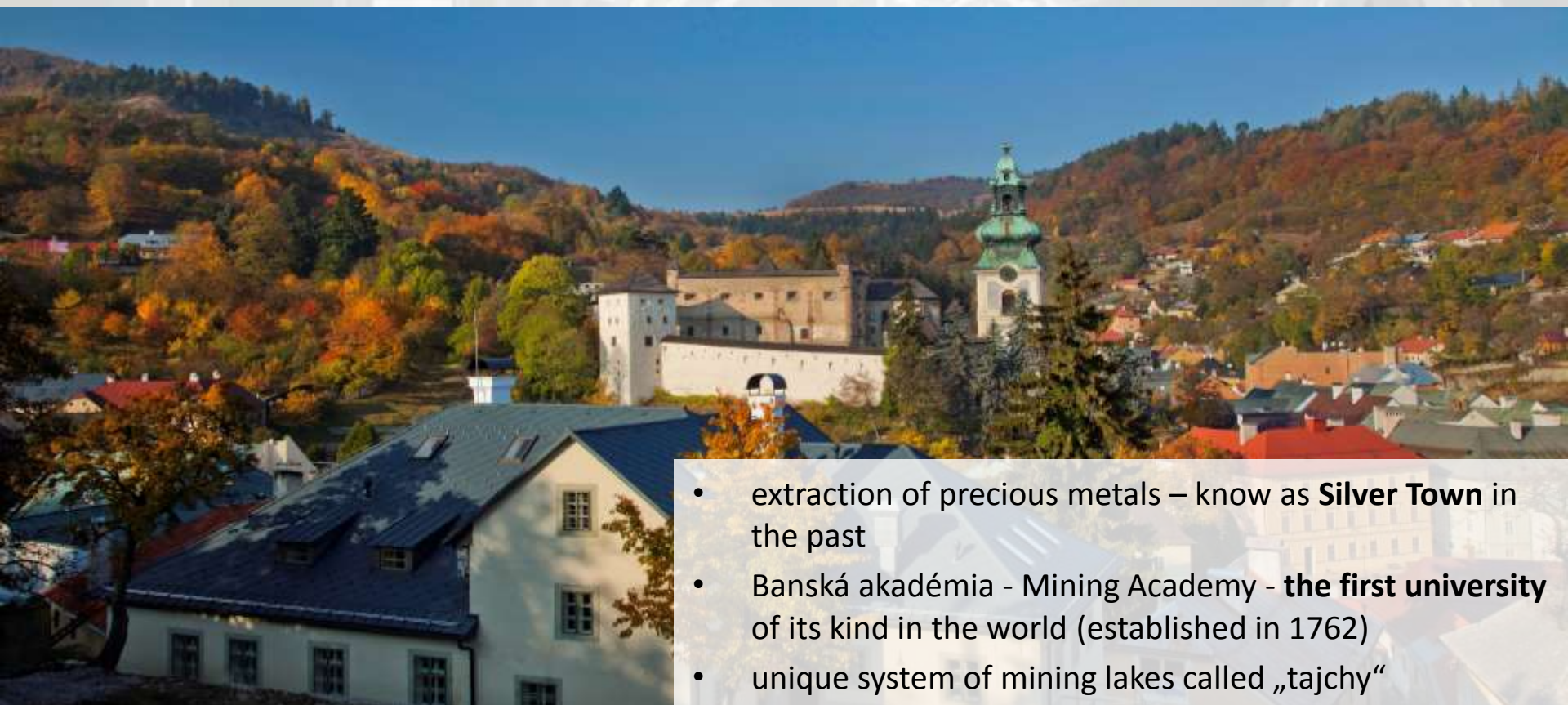
# Košice



- the second biggest town of Slovakia
- located on the east part of country
- long history – first mention in 1230
- many historical sights
- European Capital of Culture 2013



# Banská Štiavnica



- extraction of precious metals – know as **Silver Town** in the past
- Banská akadémia - Mining Academy - **the first university** of its kind in the world (established in 1762)
- unique system of mining lakes called „tajchy“



# Caves



- total caves discovered 6200
- 18 caves available to public
- very unique structures
- Ochtinská Aragonite Cave
- Slovak Karst - 4 Caves in UNESCO heritage

Dobšinská Ice Cave

# Spiš Castle

- the **largest castle complex** in Central Europe
- first mention in 1120
- UNESCO heritage
- interesting nearby attractions





# Bojnický zámok



- „fairy tale castle“ Bojnický zámok
- the typical silhouette of the medieval castle
- International festival of Ghosts and Spirits
- wedding ceremonies and celebrations

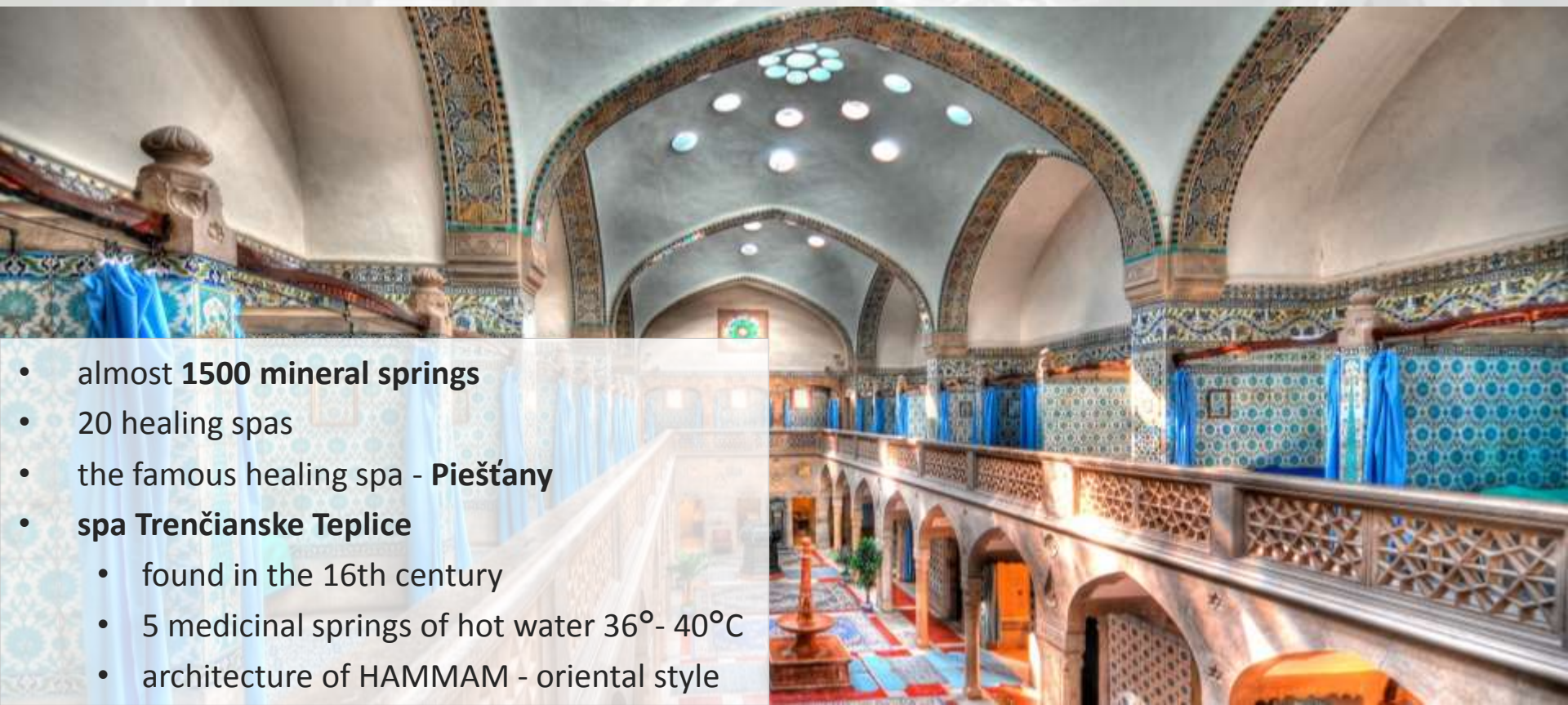


# Natural Beauty



- **9 national parks** and beautiful countryside
- **High Tatras** - Slovak great mountains
  - TOP - Gerlachovsky peak - 2655 m
  - modern cable lift
  - honeymoon apartment possibility
  - thermalwater & spas
  - active holidays during whole year

# Spa



- almost **1500 mineral springs**
- 20 healing spas
- the famous healing spa - **Piešťany**
- **spa Trenčianske Teplice**
  - found in the 16th century
  - 5 medicinal springs of hot water 36°- 40°C
  - architecture of HAMMAM - oriental style



# Tastes of Slovakia



- traditional cuisine
- Bryndzové halušky, žinčica
- soups – made of cabbage, garlic, bean
- Skalický trdelník
- modern restaurants
- wines and spirits
- long tradition in beer production



# Other travel informations

[www.slovakia.travel](http://www.slovakia.travel)



# Slovakia

TRAVEL IN  
SLOVAKIA  
GOOD IDEA

Thank you for  
your attention

TRAVEL IN  
SLOVAKIA  
GOOD IDEA



**PREŠOV**  
**SELF-GOVERNING**  
**REGION**





PREŠOVSKÝ  
SAMOSPRÁVNÝ  
KRAJ

# Prešov Self-Governing Region

- regional self-government
- an independent legal entity with original and shifted competences

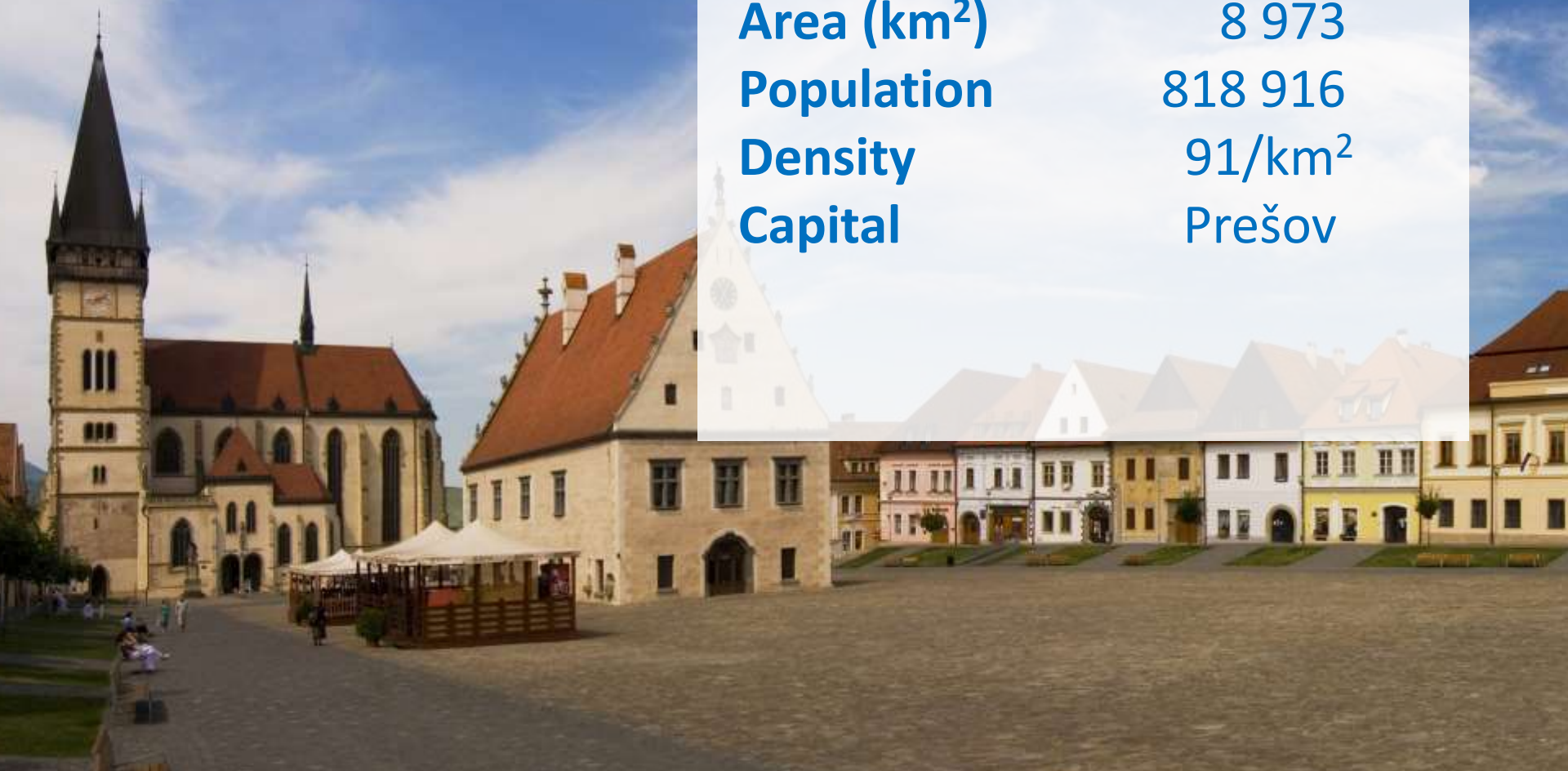


PREŠOVSKÝ  
SAMOSPRÁVNÝ  
KRAJ



## Basic information

Area (km <sup>2</sup> )	8 973
Population	818 916
Density	91/km <sup>2</sup>
Capital	Prešov



PREŠOVSKÝ  
SAMOSPRÁVNÝ  
KRAJ



## Nature

- 5 national parks
- 2 protected landscape areas
- 181 protected areas



PREŠOVSKÝ  
SAMOSPRÁVNÝ  
KRAJ



## Castles, palaces, manors

- 3 big castles
- 14 ruins
- 6 manors
- 2 palaces







## Wellness and Spa

- 400 springs of mineral and thermal waters
- 10 spa resorts
- 3 waterparks



PREŠOVSKÝ  
SAMOSPRÁVNÝ  
KRAJ





## High Tatras

- the smallest high mountains in the world
- Gerlachovský Peak: 2 655 m

## Ski destination

- 27 ski resorts
- 24 km of ski slopes





# UNESCO

- Spiš Castle and heritage of its surroundings
- Historical centre of the town Bardejov
- The most valuable wooden churches
- Carpathian beech forests



PREŠOVSKÝ  
SAMOSPRÁVNÝ  
KRAJ





## Wooden churches

- 26 wooden churches
- 4 included on the UNESCO list







# THE NORTHEAST SLOVAKIA Regional tourism organization

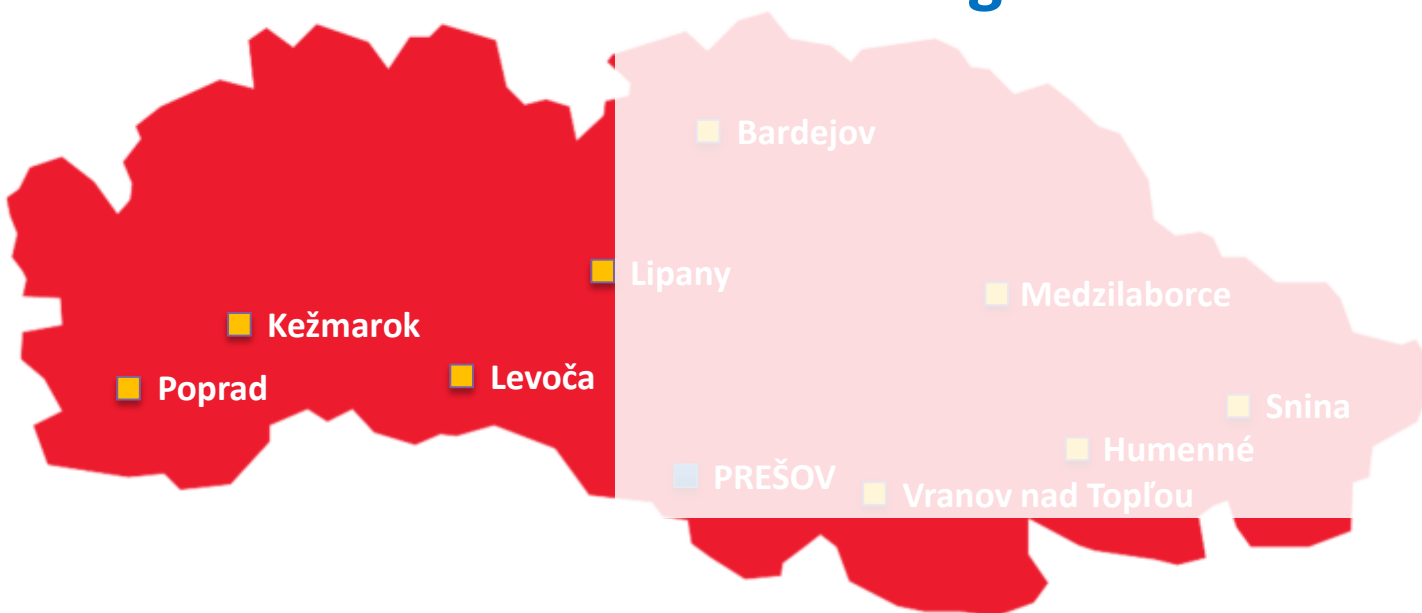
- [www.severovychod.sk](http://www.severovychod.sk)



PREŠOVSKÝ  
SAMOSPRÁVNÝ  
KRAJ



# Industrial parks in the Prešov Region



Industrial park (IP)	City/Town	Area	Accessibility	Type*
Poprad - Matejovce	Poprad	14 ha	0 ha	GF
Vihorlat Snina	Snina	80 ha	30 ha	BF
Industrial Park Lipany “Za traťou”	Lipany	8,5 ha	1,8 ha	GF
Industrial Zone Kežmarok	Kežmarok	27 ha	10 ha	GF
Industrial Zone Chemes Humenné	Humenné	64 ha	8,7 ha	BF
Prešov Zaborské	Prešov	26 ha	18 ha	GF
Industrial Park Ferovo	Vranov nad Topľou	16,9 ha	16,9 ha	GF
Industrial Park Medzilaborce	Medzilaborce	4,75 ha	4,75 ha	GF
Industrial Park Levoča	Levoča	12 ha	8,5 ha	BF/GF
Industrial Park Bardejov	Bardejov	72,3 ha	30 ha	BF/GF

*\*GF – Greenfield \*BF – Brownfield*



**PREŠOVSKÝ  
SAMOSPRÁVNÝ  
KRAJ**





*Use the opportunities and realize your business plans in our region.*

**YOU ALL ARE WELCOME!**

[www.po-kraj.sk](http://www.po-kraj.sk)



**PREŠOV  
SELF-GOVERNING  
REGION**

[www.po-kraj.sk](http://www.po-kraj.sk)



# DISCOVER LIPTOV



- **TOP MOUNTAIN DESTINATION** in Central Europe
- **FAST AIRPORT TRANSFER**
- **Unique offer**
  - SKING and WELLNESS & HEALING STAYS** in winter
  - HIKING/CYCLING and WELLNESS & HEALING STAYS** in summer
- **Plenty of ACTIVITIES**
  - Nature /Culture/ History/ Fun for kids**









# MOUNTAIN AND NATURE

3 NATIONAL PARKS



**LIPTOV**<sup>®</sup>  
TREBA ZAŽIŤ





**INVESTMENTS 190 mil. EUR** (last 7 years, LIPTOV region)



**LIPTOV**  
SLOVAKIA





# SKIING IN LIPTOV

[www.visitliptov.sk](http://www.visitliptov.sk)

**2 TOP SKI resorts**  
**More than 70 km of ski slopes**  
**72 ski lifts and cableways**  
**5 months snow guarantee**  
**SKI & AQUA BUS**

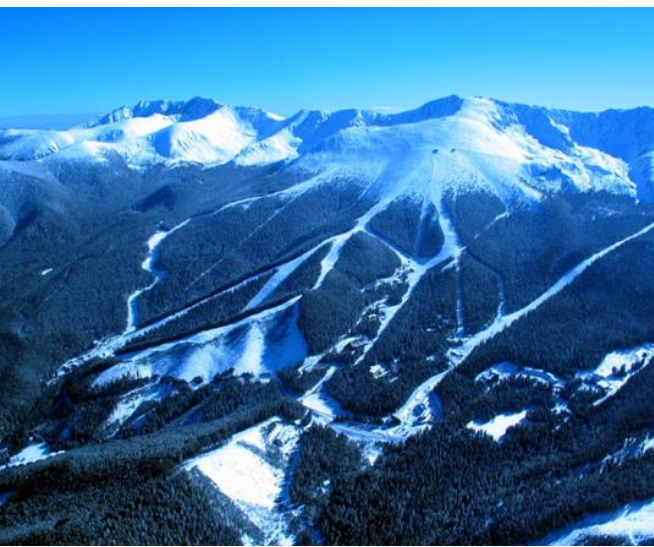


**LIPTOV®**  
SLOVAKIA





# JASNÁ NÍZKE TATRY Top SKI resort in Slovakia



**LIPTOV®**  
SLOVAKIA





# NUMBERS and FACTS TOP Ski resort in Slovakia



**30** cable cars and ski lifts  
**33.000** people / hour



from **943 m** above sea level  
to **2024 m** above sea level



**46 km** ski slopes



**53%** ski slopes with  
artificial snow







## LANOVKY A ZJAZDOVKY / CABLEWAYS AND SKI SLOPES

### KABINKOVÉ LANOVKY / CABLEWAYS

- A1 Priehyba - Čopok
- A2 Kosodrevina - Čopok
- A3 Grand - Biššák
- A4 Jasná - Priehyba

### SEDAČKOVÉ LANOVKY / CHAIR LIFTS

- B1 Záhradky - Rovná Hôľa
- B2 Záhradky - Priehyba
- B3 Biela Púť - Jasná
- B4 Jasná - Luková
- B5 Otupné - Luková
- B6 Srbské - Kosodrevina
- B7 Rovná Hôľa - Konejší Grôň
- B8 Luky - Vyhliadka

### VLEKY / SKI LIFTS

- C1 Záhradky
- C2 Pekná vyhliadka
- C3 Jasná - Luková
- C4 Otupné - Žďaň
- C5 Biššák
- C6 Otupné
- C7 Dereše
- C8 Krupová I
- C9 Krupová II
- C10 Kosodrevina - Luky

### VLEKY / SKI LIFTS

- C11 Kosodrevina
- C12 Čopok - juh
- C13 Predná Dereše
- C14 Zadná Dereše

### ZJAZDOVKY / SKI SLOPES

- 1 Priehyba - Priehyba - Záhradky
- 1a Priehyba - Luková - Priehyba
- 1b Priehyba - Konejší Grôň - Luková
- 1c Priehyba - Čopok - Konejší Grôň
- 2 Majová
- 3a Majová
- 3b Spravidlá
- 4 Radinná
- 5 Turistická
- 5a Turistická
- 6 Jasná - Luková
- 7 Majstrovská
- 7a Otupné
- 10 Vrbická
- 10a Vrbická
- 11 FIS Rovná Hôľa - Záhradky
- 11a FIS Konejší Grôň - Rovná Hôľa
- 12 Jelení Grôň

### ZJAZDOVKY / SKI SLOPES

- 13 Biela Púť
- 14 Luky
- 31 Slnčina
- 31a Trnávka
- 32 Vyhliadka
- 32a Vyhliadka
- 33 Zlatá Hôrka
- 33a Zlatá Hôrka
- 34 Hotelová
- 35 Dereška
- 36 Krupová

### LYŽIARSKÉ CESTY / SKIROADS

- 40 Čopok - Luková
- 41 Jasná - Otupné
- 42 Priehyba - Jasná
- 43 Turistická - FIS
- 44 Majstrovská
- 45 FIS - Turistická
- 50 Kosodrevina - Slnčina - Krupová
- 51 Predná Dereše - Kosodrevina
- 52 Zadná Dereše - Predná Dereše
- 53 Vyhliadka
- 54 Čopok - Zadná Dereše

## LEGENDA / LEGEND

- A1 KABINKOVÁ LANOVKA CABLEWAY
- A2 KABINKOVÁ LANOVKA CABLEWAY
- A4 KABINKOVÁ LANOVKA CABLEWAY
- B1 SEDAČKOVÁ LANOVKA CHAIR LIFT
- C1 VLEK SKI LIFT

- 13 LÁHKÁ TRASA EASY SKI TRAIL
- 1a STREDNE ŤAŽKÁ TRASA MEDIUM SKI TRAIL
- 3 ŤAŽKÁ TRASA DIFFICULT SKI TRAIL
- 11 LYŽIARSKA CESTA SKIROAD
- NOČNÉ LYŽOVANIE NIGHT SKIING

- TATRY MOTION TATRY MOTION
- MAXLAND MAXLAND
- SNOWPARK SNOWPARK
- UBYTOVANIE ACCOMMODATION
- RESTAURÁCIA RESTAURANT

- BEŽECKÉ LYŽOVANIE CROSS-COUNTRY SKIING
- PANORAMATICKÝ VÝHLED VIEWPOINT
- P5 PARKOVISKO PARKING
- INFOCENTRUM INFOCENTER
- POKLADNÁ CASH DESK

INFOCENTRUM / INFOCENTER BIELA PÚT  
+421 907 88 66 44 • info@jasna.sk

MOUNTAIN RESCUE SERVICE  
Hotline NON-STOP: 18 300

www.jasna.sk

operated by  
**TATRY**  
MOUNTAIN RESORTS

FIS ALP  
WORLD CUP

**LIPTOV**  
SLOVAKIA





# SKIPARK MALINÔ BRDO



**LIPTOV**<sup>®</sup>  
SLOVAKIA





**HIKING / CYCLING**

[www.visitliptov.sk](http://www.visitliptov.sk)



**LIPTOV**<sup>®</sup>  
SLOVAKIA





## WELNESS & SPA

[www.visitliptov.sk](http://www.visitliptov.sk)

- 2 largest water parks, SPA in Central Europe
- thermal water rich in minerals or seawater
- 41 pools
- 45 water slides with a total length of more than 3000 m



**LIPTOV**<sup>®</sup>  
SLOVAKIA





# HEALING STAYS IN MEDICAL SPA LUCKY



- **Medical spa in Slovakia with a rich history**  
LUCKY SPA belongs among the oldest spas in Slovakia
- **unique thermal mineral healing water in Liptov** used in swimming pools and mineral baths
- mineral water has a high content calcium (606 mg / L) and other minerals (Mg, Mn, Cu, Zn, Sr, F, Se, Na ...)
- **Medical SPA Lucky** treats movement disorders, female disease, nervous disorders, digestive diseases, diseases of the metabolic and endocrine glands, non-tuberculous respiratory diseases,







# CAVES and UNDERGROUND BEAUTY

[www.visitliptov.sk](http://www.visitliptov.sk)



**4** caves

the largest cave system in Central Europe

**LIPTOV**<sup>®</sup>  
SLOVAKIA

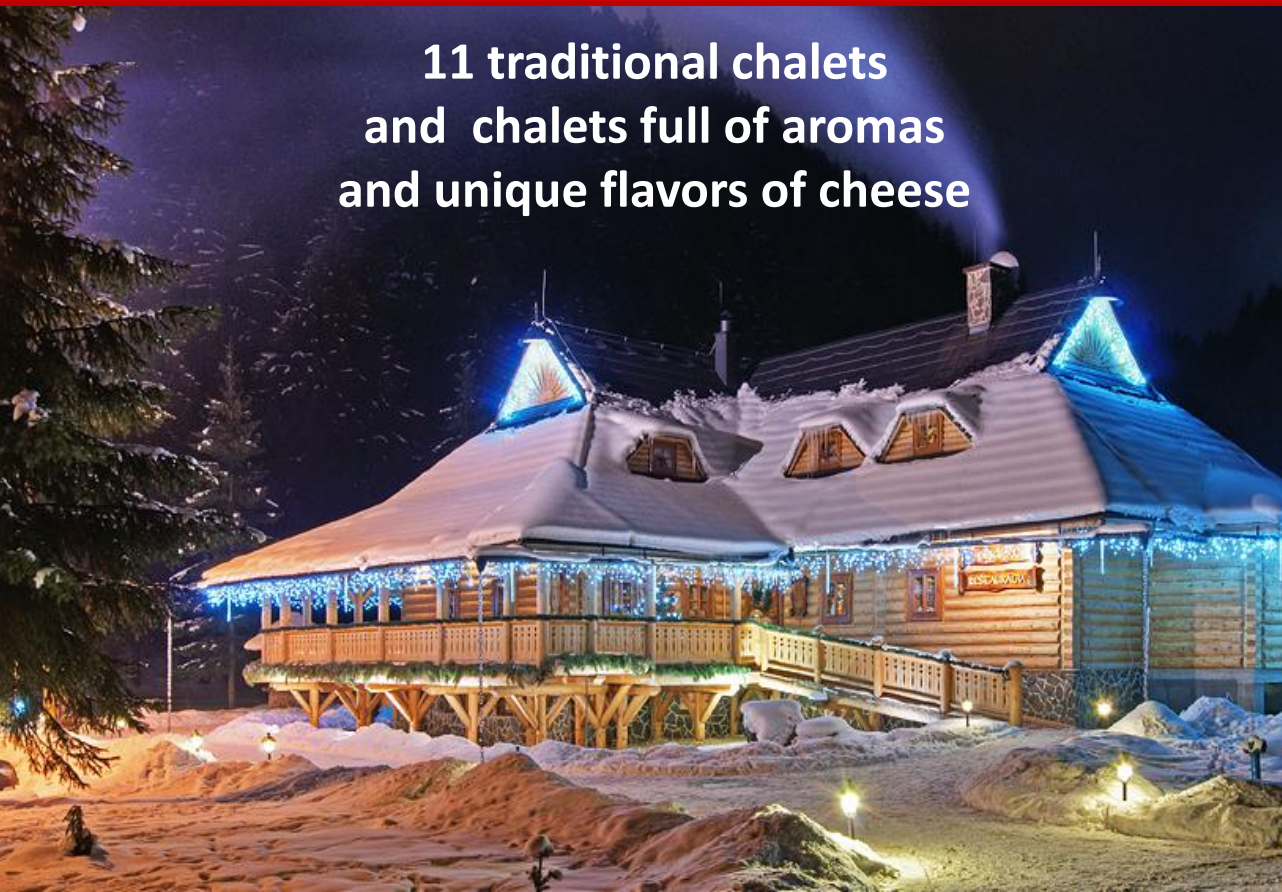




# TRADITIONAL GASTRONOMY

[www.visitliptov.sk](http://www.visitliptov.sk)

11 traditional chalets  
and chalets full of aromas  
and unique flavors of cheese



**LIPTOV**<sup>®</sup>  
SLOVAKIA





# HISTORY AND TRADITION

[www.visitliptov.sk](http://www.visitliptov.sk)

3 Archeoskanzen a UNESCO monument

3 castles

22 museums

7 galleries



**LIPTOV**<sup>®</sup>  
SLOVAKIA





# SHOPPING

[www.visitliptov.sk](http://www.visitliptov.sk)

Modern shopping centers

Shopping on a hillside - Tatra MOTION

10 x shops

10 x ski schools

3x MAXilands

8x rentals



**LIPTOV®**  
SLOVAKIA





**NIGHTLIFE**

[www.visitliptov.sk](http://www.visitliptov.sk)

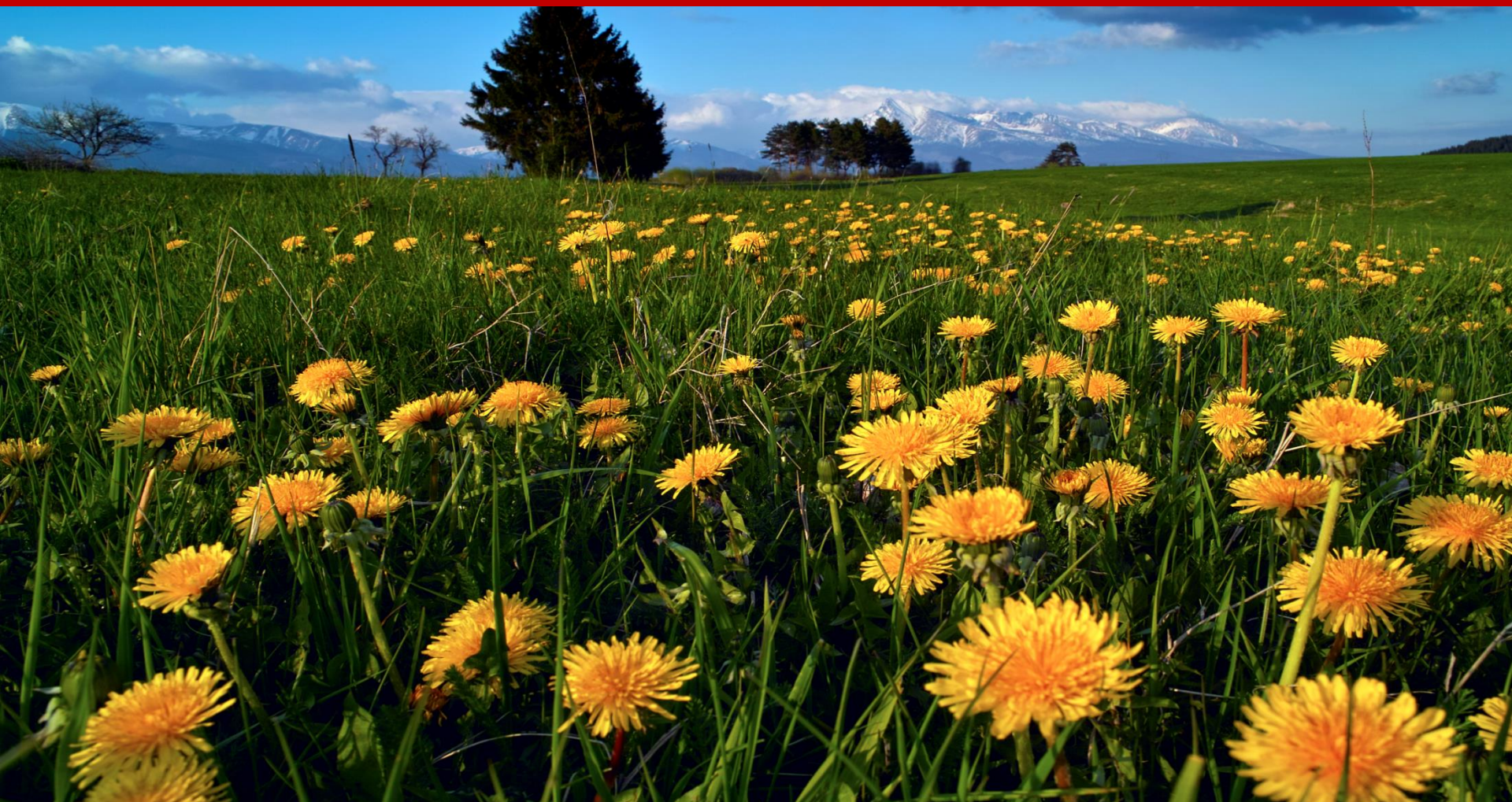
**300 restaurants, bars and discos**



**LIPTOV®**  
SLOVAKIA



# LIPTOV SLOVAKIA



**visitliptov.sk**

**info@visitliptov.sk**

**REGION LIPTOV – Destination Management Organization**

